

## Alpha System

- Partition thickness: 100 mm
- 1200 mm modules. Others upon request.
- Pre-fabricated, non-supporting construction
- The steel studs are made in hot-dip galvanised steel (Sendzimir) with a minimum zinc coating of 60 g/m<sup>2</sup> for the whole surface.
- Visible profiles: extruded aluminium, powder-coated.
- The ceiling track offers an integrated hanging system for paintings and the like.
- PVC insert strip
- 2 x 12.5 mm plasterboard panels (for ALPHA VIP 2 more panels of 12.5 mm are added).
- Partition covering: vinyl/fabric
- Insulation: 40 mm mineral wool
- Double glazed glass elements
- Bottom track with toe recess
- Height: till 3000 mm

### Doors:

#### Construction:

- Flush; hollow-core chip board;
- 880 mm or 930 mm with upper panel
- 880 mm or 930 mm, room high

Interfinish partition systems are designed and tested for interior use.

### Fire resistance

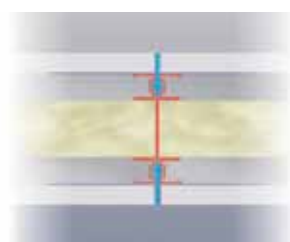
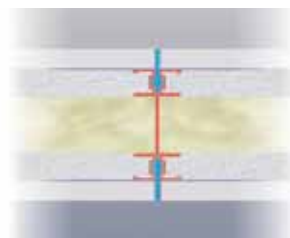
Our partition systems are thoroughly tested to comply with the most stringent building standards. Independent laboratories have verified a 30-minute fire resistance capacity for the Alpha, based on the NEN 6069 (stability and flame density), NEN 6065 (rate of fire spread) and smoke production standards. The latest tests are made according to the EU norms. The Alpha with a 60 minute fire resistance capacity, features a double layer of plasterboard panels.

### Sound insulation

Independent laboratories test the sound insulation qualities of our systems. All Interfinish partition systems comply with the most stringent building standards. The sound insulation value in a solid Alpha partition system is Rw 46dB (ISO 717) or, alternatively Ilu-7 (3 m room depth). For a solid Alpha VIP partition system with double layer plasterboards, the sound insulation value is Rw 49 dB (ISO 717) or, alternatively Ilu-3(3m room depth). Higher values are available on request.

Your Interfinish specialist:

[www.interfinish-int.com](http://www.interfinish-int.com)



Partition System

## Alpha System

A warm atmosphere and a unique profile



*Interfinish is the ultimate demountable system*



Interfinish produces relocatable partitions that rank among the best in today's market. They excel in terms of construction, design and multifunctionality. That's why so many designers and architects opt for Interfinish. With the introduction of the Alpha partition system, Interfinish is living up to its good reputation once again. The Alpha system boasts virtually invisible seams. This gives the appearance of a seamless partition with exclusive looks, creating a particularly warm atmosphere wherever it is used. The slim profile, stable construction and great variety of possible finishes make the Alpha a partitions system with a clearly distinctive character.

The Alpha is a non-supporting, fire-resistant partition system. The partition consists of 1.2 modular elements joined together using an ingenious patented system.

The door frame and glass elements are self-contained so that no inlay or supporting profiles are necessary. The partitions can be installed quickly and are easy to relocate.

The system consists of steel studs, which are placed in aluminium ceiling and floor tracks.

Openings to feed electrical cables and various wires through are a standard feature of these studs.

Likewise, space is provided to feed wires through the base tracks. The ceiling tracks are equipped with a continuous picture rail and the floor track also serves as a recessed skirting board. The Alpha can be delivered with solid panels, transparent and/or frosted double glazed elements, door units, corner posts, wall- and partition abutment. The standard height of the partitions is 3m.

For enclosed areas where considerable sound insulation is required, a special version of the Alpha is available: Alpha VIP. Although not outwardly different from the Alpha, this partition



system is created with double plaster board panels, which increase the sound insulation value. The two systems can be combined without requiring adaptations. More and more architects and interior designers opt for Interfinish partition systems, which combine well thought-out aesthetics with practical advantages such as straightforward installation and the ease with which they can be rearranged.

All Interfinish partition systems are available in a wide range of colours. Matching doors, either spray-painted or HPL, are also available.

The partitions themselves can also be finished in a wide range of materials: from vinyl to tissue and laminate in various patterns and colours.

Possible options even include an alcantara or leather finish.

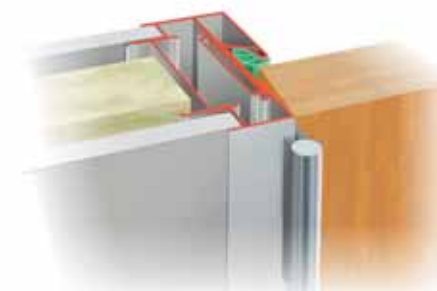
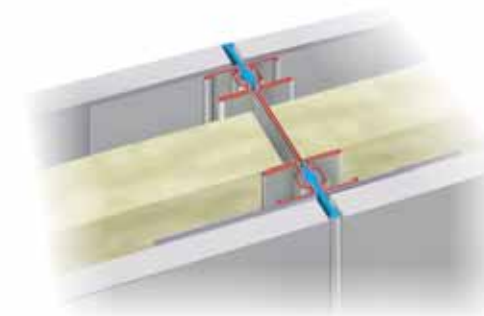


*Interfinish is the ultimate demountable system*

## Alpha System and Alpha-VIP

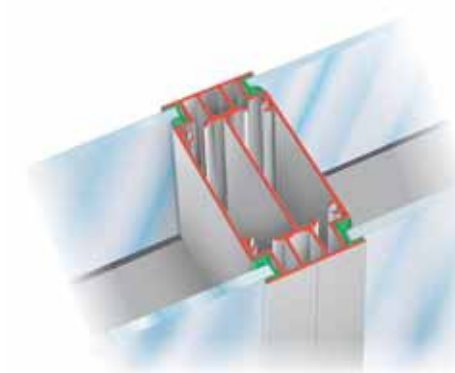
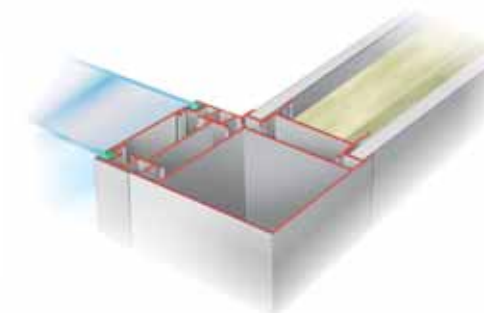
Technical Details

Alpha and Alpha VIP partitions systems combine straightforward installation with a highly favourable price/quality ratio. Thanks to their unusually slender profile and the well thought-out details, these partitions are also esthetically pleasing. In combination with doors, glass elements and cupboard systems, they make it possible to integrate interior layout arrangements and create extra space.



Solid panels consist of plasterboard or chipboard with a mineral wool core. The panels are held in place with the Alpha click-in system using ultra-thin plastic insert strips, and are attached to the steel supports.

Along with Y-connections and wall end posts, corner posts are available for 90-degree and 135-degree angles, making many different layouts arrangements possible.



The glass elements are joined using a click-profile connecting the two elements, thus showing a smooth and attractive seam. All visible profiles are made of aluminium and are powder coated.

A wide range of doors can be supplied with the Alpha system. These doors are made of 40mm flush hollow-core chipboard and are delivered complete with fittings. Special sound-proof and fire-resistant doors can also be supplied. The door frames have three or four enamelled, aluminium hinges with a steel core. There is a selection of handles and shields.

The glass elements are double-glazed and consist of an aluminium frame holding glass (various types are possible) of various thicknesses. The glass panes are held in place by glazing beads.

All systems are supplied pre-finished which makes installation possible in the very shortest time and eliminates painting and drying times. Alterations are possible even during working hours.